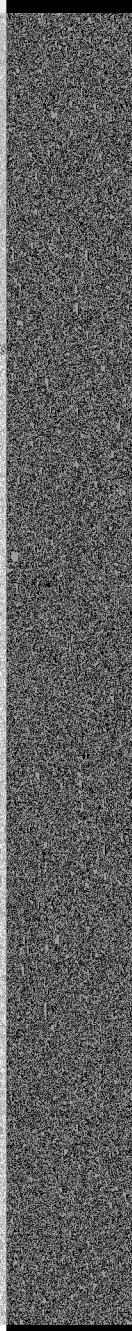
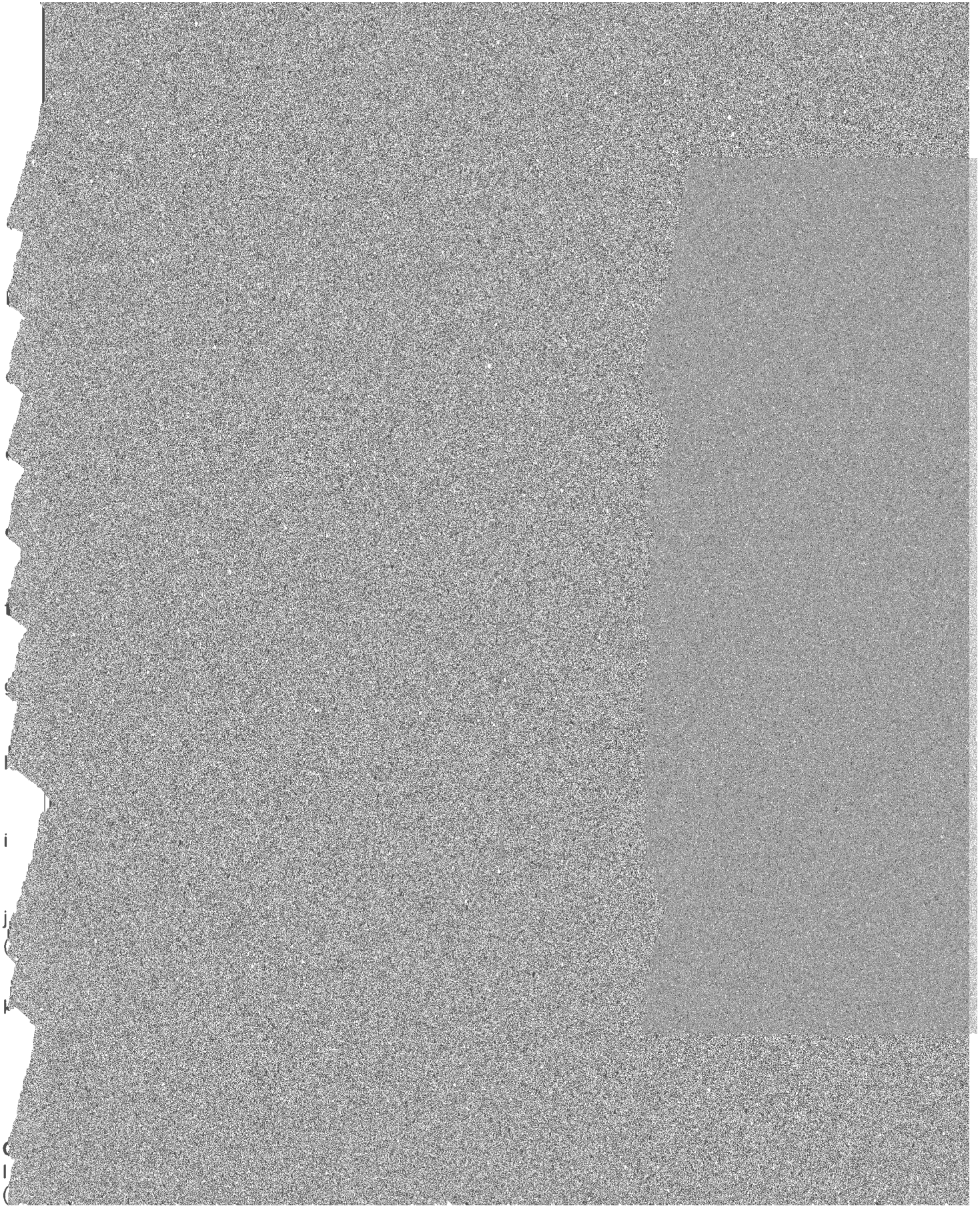


Page 12

1997

...





Crimin

Of those c

On-campus

Criminal o

a.

b. Mansla

c. Rape

d. Fondling

e. Incest

f. Statutory

g. Robbery

h. Aggrava

i. Burglary

j. Motor ve

(Do not inc

[]

)] []

[] []

)] [

]]

)] [

[]

]

e. Incest

f. Statutory rape

g. Robbery

h. Aggravated assault

i. Burglary

j. Motor vehicle theft

(Do not include theft *from* a motor vehicle)

k. Arson

Caveat:

If you have changed prior years' data, you must add a caveat explaining the change (YEAR), Line (X) was changed from (A) to (B) because (REASON).

Hate Crimes - On campus

For the criminal offenses listed below, first enter the total number of occurrences that occurred On campus. Then break down each total by category of bias (e.g., race, religion, sex, sexual orientation).

YEAR 2023

Criminal offense

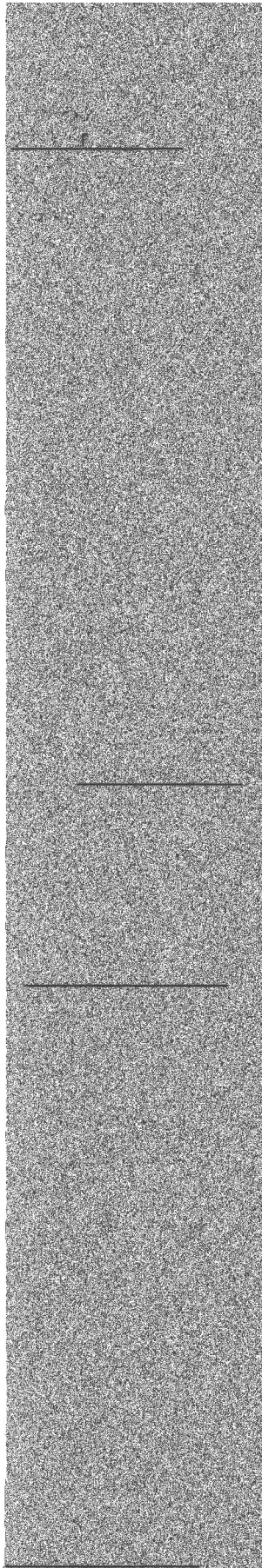
Total

Occurrences

Race

Religion

**Sex
orientation**



vandalism of property.

0	0	0	0	0	0	0	0	0
0	0	0	0	0	0	0	0	0
0	0	0	0	0	0	0	0	0

I

II

0

0

0

0

0

0

(Do not include theft from a motor vehicle)

0

0

0

0

0

YEAR 2022

0

Murder

manslaughter

c. Rape

d. Force

e. Incest

f. Statutory

g. Robbery

h. Aggravated

i. Burglary

j. Motor Vehicle

k. Arson

l. Simple

m. Larceny

n. Intimidation

o

Destruction

vandalism

Criminal

1. Introduction

The first part of the document discusses the importance of maintaining accurate records of all transactions.

It is essential to ensure that all data is entered correctly and consistently.

This section outlines the procedures for handling any discrepancies or errors that may arise.

The following steps should be followed when conducting a regular audit of the accounts.

It is recommended that a detailed report be prepared at the end of each reporting period.

The final section provides a summary of the findings and offers suggestions for future improvements.

2. Methodology

The methodology used in this study involves a combination of qualitative and quantitative data analysis.

The primary data source is the financial statements provided by the participants.

Secondary data is obtained from various industry reports and academic journals.

The data is analyzed using statistical software to identify trends and correlations.

The results are then compared against established benchmarks to assess performance.

The study is limited by the availability of data and the potential for bias in the selection of participants.

3. Results

The results of the study indicate a significant positive correlation between the variables studied.

The data shows a clear upward trend in the overall performance metrics over the period.

Specifically, the growth rate in the second quarter was notably higher than in the first.

This increase can be attributed to several factors, including improved operational efficiency.

Furthermore, the implementation of the new strategy has yielded positive results.

The financial statements reflect a steady increase in revenue and a decrease in expenses.

These findings are consistent with the theoretical framework proposed in the methodology section.

The statistical analysis confirms the significance of the observed differences between the groups.

Overall, the study provides strong evidence for the effectiveness of the proposed approach.

The data also suggests that there is still room for improvement in certain areas.

Future research should focus on identifying the specific factors that drive these trends.

The study concludes that the current findings are promising and warrant further investigation.

The authors thank the participants and the funding organization for their support.

The data is available upon request for those interested in a more detailed analysis.

The study is published in the Journal of Business and Economics, Volume 15, Issue 2.

The authors are available for consultation regarding the study's findings and methodology.

The study is a registered work of the author and is protected by copyright law.

i.

j.

(

n

k

l.

m

n

o

De

va

Y

Cr

a.

M

ma

c. P

d. P

e. P

f. Statute

g. Robbery

h. Aggravated

i. Burglary

j. Motor Vehicle

k. Arson

l. Simple

m. Larceny

n. Intimidation

o. Destruction of

vandalism

Criminal

a. Murder/

manslaughter

c. Rape

d. F

e. L

f. S

g. F

h. A

i. B

j. M

k. A

l. S

m. L

n. L

o.

Des

van

Cav

If yo

(YE

Hate Crimes - Public Property

For the criminal offenses listed below, first enter the total number of Hate Crimes on Public Property. Then break down each total by category of bias (e.g., race,

Criminal offense	Total	Occurrences of Hate crimes			
		Race	Religion	Sexual orientation	Gender

a. Murder/ Non-negligent manslaughter

c. Rape

d. Fondling

e. Incest

f. Statutory rape

g. Robbery

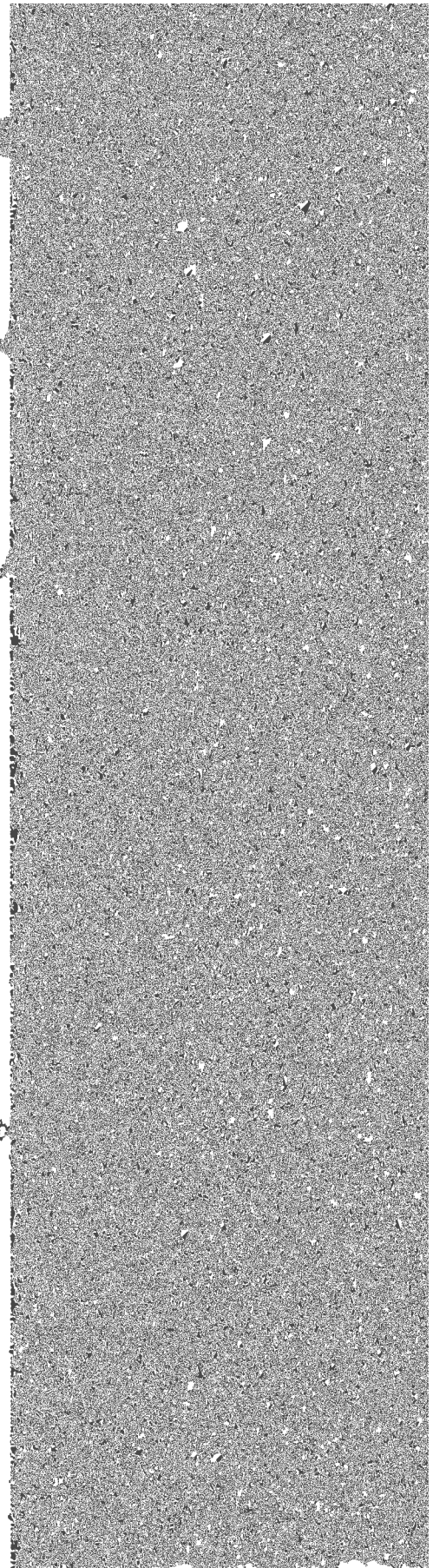
h. Aggravated assault

i. Burglary

j. Motor vehicle theft

le

k. Arson





a.

b.

c.

Ca
If y
(YE

VA

For

Crit

a. D

b. D

c. S

Cave
If yo
(YEA

a. Domestic violence

b. Dating violence

c. Stalking

Caveat:

If you have changed pr
(YEAR), Line (X) was ch

Arrests - On c

Enter the number of Arr

Crime

a. Weapons: carrying, p

b. Drug abuse violations

c. Liquor law violations

Please Note: Do NOT



We

{

}]

}

We

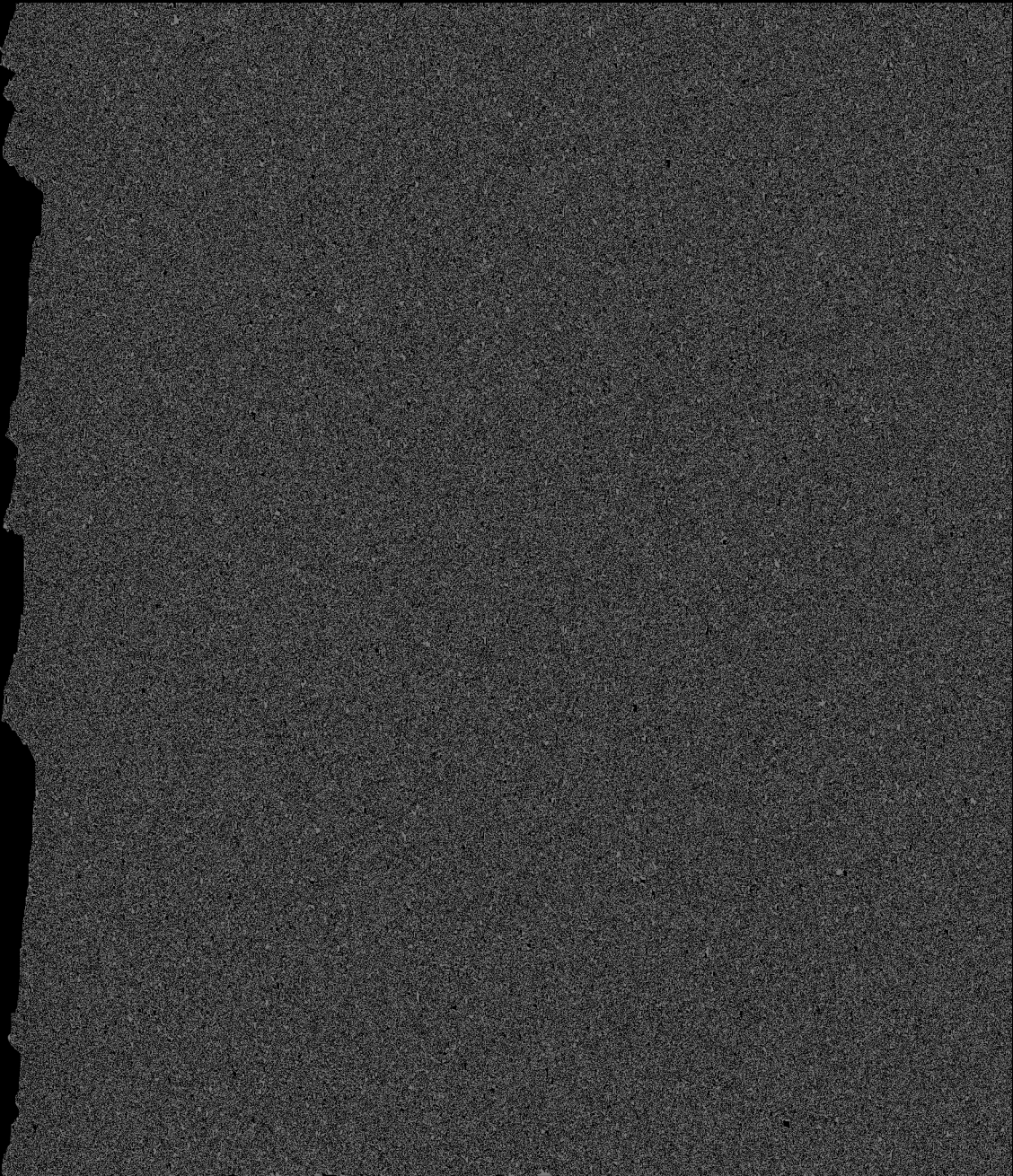
{

}]

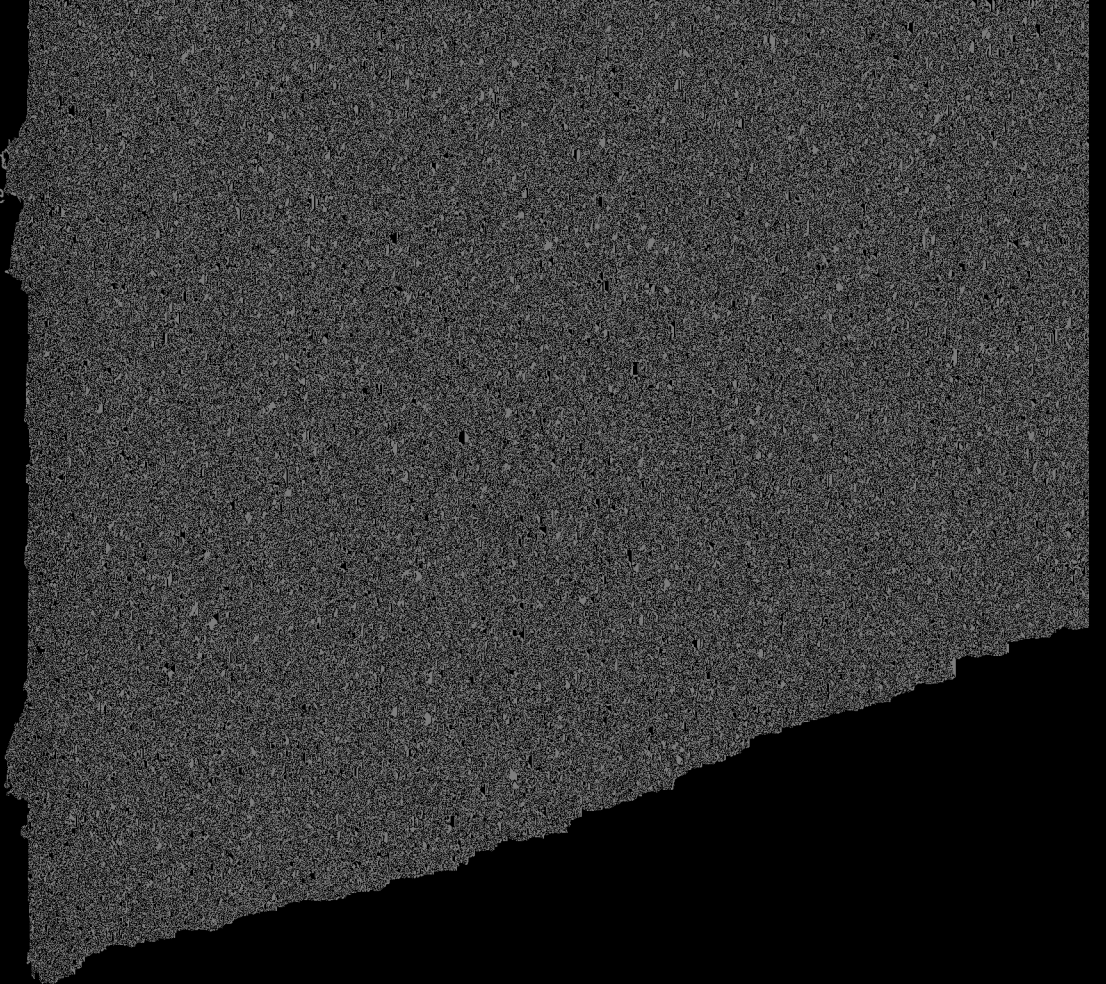
}

Do not hold
If the discip

Do not include d
If the disciplinar



ot include disciplinary act
disciplinary action is the



Enter the

the follo

Do not include disciplinary actions that were strictly for school policy violations.

If the disciplinary action is the result of an arrest, please do not count it here; count the violation as 1 arrest.

Crime

a. Weapon

b. Drug a

c. Liquor

Please

Caveat:

If you have
(YEAR), L

Unfou

Of those c

buildings,

The total number of unfounded crimes should include all criminal offenses, hate crimes, domestic violence, dating violence, or stalking incidents that have been unfounded. Arrests and disciplinary actions cannot be unfounded.

